



CHASHMA

Galaxy

JULY 2023



Table of Contents

1.	Management Messages	03
	• Chief Executive Officer Message	04
	• Senior Executive Director Message	05
	• Chief Finance Officer Message	06
	• Editorial	07
	• Team Chashma Galaxy & Team Message	08
	• Our Core Values	09
2.	Urban Geography	11
	• History of D.I.Khan	12
	• The Story of SS Jhelum Running From D.I.Khan to Darya Khan	14
3.	Team Members Contribution	16
	• Nine Ways to Develop your Subordinates	17
	• The Top 10 Sugar Producing Countries In The World	19
	• Advantage of Sugar	21
	• Hard Work is the key to Success	23
	• How Sugar Is Made	24
	• Gurr & Sugar	26
4.	Young Talent	27
5.	Events	31
	• Inauguration Ceremony of Crushing Season 2022-23 CSM 1	32
	• Inauguration Ceremony of Crushing Season 2022-23 CSM 2	34
	• Ultimate Whole Food	36
	• 14th Independence Day of Pakistan	37
	• Chasma Super League Season-1	38
	• Chashma Ethanol Fuel Plant HSE Awards	40
	• Future Events	41
6.	IT Segment	42
	• What is Artificial Intelligence	43
	• Shortcut Keys	45
7.	C.S.R: Corporate Social Responsibilities	46
8.	Kids Galaxy	52
	• Rain & What Times Means to a Person	53
	• Sweet Memories of Chashma Family Kids	55



Management
MESSAGES





Chief Executive Officer **MESSAGE**



ABBAS SARFARAZ KHAN
(Chief Executive Officer)

My Dear Team,

I would like to congratulate each member of the **"Chashma Galaxy"** on successful completion of Crushing Season 2022-23. During the Year we have faced several challenges like Floods, Security unrest in the area and increasing Inflation. The floods 2022 caused huge devastation in the area. I would particularly appreciate the resilience of all employees and their families who faced these trying moments of floods with courage and resolve. I am thankful to Almighty Allah that despite all odds He gave us strength and determination to work persistently. The sense of responsibility and commitment of our Team Members at all tiers is commendable and I am certain that by working hands in glove, we will continue to achieve the best.

I would also like to appreciate the team of Chashma Galaxy Magazine who have provided a platform to all members to express their thoughts and creative ideas. I wish you all good luck in times ahead.

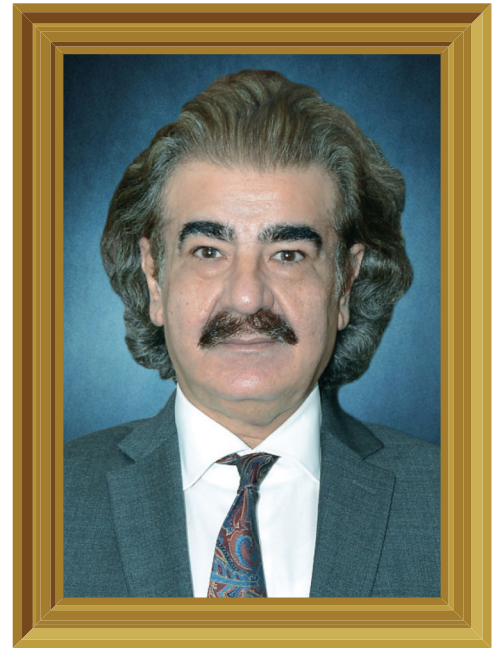


Senior Executive Director **MESSAGE**

Dear Team Members,

I want to appreciate each one of you for your hard work and dedication to the cause due to which we have been able to meet all challenges. Your consistent hard work and passion to achieve desired goals is the key to success. In today's rapidly changing world, we should not only focus on our objectives but must also remain fully abreast with the changing work techniques. All of us must be completely aware of state-of-the-art methods being used in contemporary fields to further improve upon our working methodology. The Year 2022 has been testing time for the members of Chashma Family, as the Floods caused serious destruction in the area. The courage and fortitude of each one of you is admirable with which you have faced these challenges. I am sure that we would be much better prepared to face such calamities in times to come.

The performance of all members during the Season 2022/23 has been rewarding and I am sure that with the same zeal and zest, you can further achieve better results and meet the future challenges ahead. Wishing health and happiness to you and your families.



ISKANDER MOHAMMED KHAN

(Senior Executive Director)



Chief Finance Officer **MESSAGE**



RIZWAN ULLAH KHAN
(Chief Finance Officer)

Dear Team,

I appreciate your excellent performance in last season despite a number of challenges including destructive floods. The achievement of company's targets has been possible due to the exceptional team spirit, hard work and dedication by each member of the factory team. During the year we have also experienced overall uncertain economic conditions. However, we have endeavored to work consistently to face all odds. I sincerely appreciate the determination and effort put in by each one of you and expect that our Chashma Galaxy Team would continue to achieve successes.

Best of Luck



Editorial **MESSAGE**

It was a great experience to work on the first volume of Chashma Galaxy Magazine. It Came into existence by the team efforts & Contributions of all Chashma Family. We tried to make it more colourful, happening and message oriented, its also covers the main events of the last year. We hope Chashma Family will like it. We pay our gratitude to the management and all team members for their support and encouragement to complete this magazine.

Live Safe/Healthy Chashma Galaxy Team





Team

CHASHMA GALAXY



MOUHI-U-DIN SHAHZAD
Cheif Editor



MUHAMMAD MUAZ
Graphic Designer



MUHAMMAD ISMAIL
Assistant Editor



BRIG (R) ALLAH NAWAZ MALIK
(Chief Admin Officer)

TEAM MESSAGE

We are very thankful to our management for the trust and confidence in our capabilities. The compilation of thoughts and ideas of all members of this wonderful Chashma Galaxy provide us a marvelous opportunity to display hidden talent. This opportunity proved that vast number of Chashma Galaxy members are full of potential in extracurricular activities other than their hard-core profession.

This is the first effort of team Chashma Galaxy and we will endeavor to bring it even better standards in times to come.

We are thankful to Brig (R) Allah Nawaz Malik, Chief Admin Officer for guidance and motivation to work as a team to achieve this benchmark.



Core VALUES



Striving for continuous improvement and innovation with commitment and responsibility.



Maintaining teamwork, trust and support with open and candid communication.



Treating stakeholders with respect, courtesy and competence.



Practicing highest personal and professional integrity.



Ensuring cost consciousness in all decisions and operations.



وَاعْتَصِمُوا بِحَبْلِ اللَّهِ جَمِيعًا وَلَا تَفَرَّقُوا

اور تم سب مل کر اللہ کی رسی کو مضبوطی کے ساتھ تھام لو
اور آپس میں تفرقہ مت ڈالو

القرآن



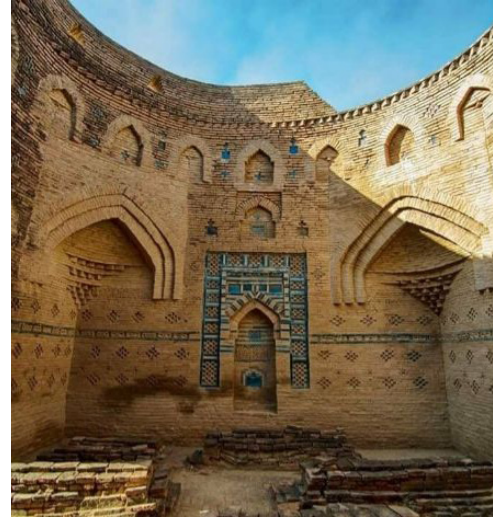


Urban

GEOGRAPHY



HISTORY OF DERA ISMAIL KHAN



D.I.Khan is located in the historical Derajat region, which was established in the 15th century, when Baluchs from the North Eastern Balouchistan were invited to settle the region by Shah Husayn, of the Langah Sultanate of Multan.

Shah Husayn being unable to hold his trans-Indus possessions, assigned the region around DI Khan to Sardar Malik Sohrab Khan Dodai Baloch in 1469 or 1471 and appointed him as “Jagir dar”. Malik originally hailed from the Makran District of southwestern Baluchistan province. His success lead to the migration of other Makrani tribesmen — one of which, Ghazi Khan, founded the city of Dera Ghazi Khan further south. Malik’s son, Ismail Khan, is traditionally believed to have founded the city of Dera Ismail Khan, though the Emperor Babur passed through the region in 1506 and made no mention of the city.

D.I.Khan was ruled by nine generations of Baluch leaders descended directly from Ismail Khan. The last, Nusrat Khan, was removed from power after the city was captured by Ahmad Shah Durrani in 1750. The city in 1794 was granted to Nawab Muhammad Khan Sadozai by Shahzada Kamran Durrani.

Re-establishment of Dera Ismail Khan

The original town was swept away by flooding on the Indus River in 1823. The present city was founded by Nawab Sher Muhammad Khan of the Sadozai clan in 1825 and now stands four miles

(6 km) back from the permanent channel of the river atop a small plateau. The rebuilt city contained a large bazaar for Afghan traders, and the city prospered from trade via the Gomal Pass. An eight-foot mud wall with nine gates was built around the city during this time as well, some of which such as the Kaneran Wala and Sakki survive until today. All existing buildings are of relatively modern construction, dating no earlier than the 19th century.

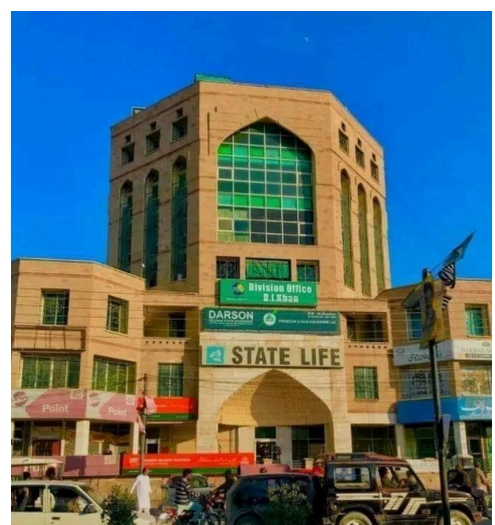
British era

In 1920 NWFP province was made out of Punjab province. D.I.Khan was made part of NWFP now known as KPK province.

D.I.Khan's first deputy commissioner under British rule was General Van Cortland, who arrived in February 1848, before departing later that year to quell revolt in nearby Multan. Following the defeat of rebels at Multan, Lieutenant Butler was made the next deputy commissioner of DI Khan and Bannu. Under his rule, the city's infrastructure and colonial administration system were established in which top posts were exclusively occupied by the British. The city was on the edge of the Tribal Areas lands that were frequently in rebellion against British rule.

As part of the 2015 China-Pakistan Economic Corridor, it was announced that D.I.Khan will be the terminus of the Hakla–Dera Ismail Khan Motorway — a 280-km, four-lane controlled access motorway that will begin at the M1 near Islamabad and serve as part of the Western Alignment of the economic corridor.

Reference: https://en.m.wikipedia.org/wiki/Dera_Ismail_Khan_District



HISTORY OF SS JHELUM RUNNING- FROM DERA TO DARYA KHAN



Steam-powered steamers are said to have been introduced in the early eighteenth century, when steam-powered paddler boats were initially built with two-way pedals, but later large ships were also pedaled. This was done, but in the high seas the speed of paddler ships would slow down, so propellers “fans” were invented to run in deep waters, and for shallower waters (rivers) peddler ships were limited.

The world’s first steam-powered steamer (Pedal Steamer) was built in France in 1774, after which several ships of the same structure were built in the United States and later several European companies landed in the shipping arena.

In 1917, the 451-ton SS Jhelum , built by Glasgow’s Elsa Shipping Company in the coastal plains of Ayr, Tron, was also a paddler ship that the British government built during World War I in the Ottoman Empire (Turkey). Deployed in the Tigris River (Iraq), where during the war it was used to deliver mobile dispensaries, deliver rations and transport troops to the battlefield.



The story of this sailing ship, which is one hundred and fifty feet long, thirty-four feet wide, has a long chimney and a wide fruit wheel at the rear is very interesting.

(SS Jhelum) How to reach Dera?

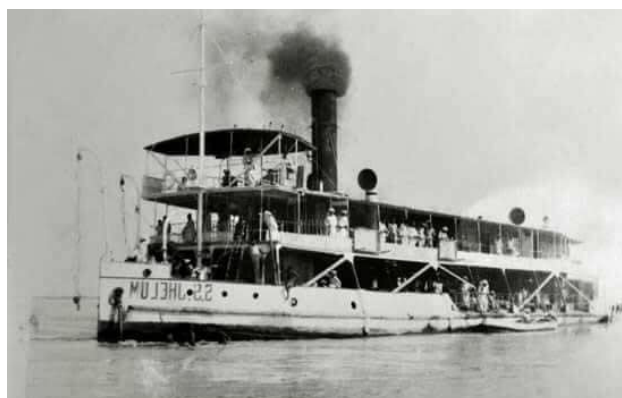
We can't say for sure, but according to some estimates, the ship may have been brought to Karachi with the S51 after the end of World War I, or it may have come to Bombay with the S45 S44.

In 1923, the British government decided to set up the world's largest irrigation project in the Pakistani Punjab region of United India, constructing the Lloyd Barrage (now Sukkur Barrage) at Rohri on the Indus River and diverting seven canals from there. The lands of Punjab and Balochistan were to be irrigated. In 1923, two large ships, five steamers and several boats were brought in to excavate the barrage. The purpose of the construction of the dam was to carry out excavations such as excavation, mud, sludge removal, construction equipment and delivery of personnel to the site. The SS Jhelum (S46) was brought to the Indus River from Bombay or Karachi for collection. As soon as the barrage project was completed, it was diverted northwards (Kala Bagh) in the Indus River, while in 1935 the NWFP The provincial government bought it from the Punjab government.

According to Jean Fairley's book The Lion River, SS Jhelum operated at Kala Bagh on the Indus River for a few years, but when the Jinnah Barrage was completed there in 1946, it was diverted to Dera Ismail Khan in the south. In those days there was a launch in the Indus River, which was almost out of order, so SS Jhelum took its place.

The story of SS Jhelum, which swam across the blue skies of the Mediterranean Sea, the Suez Canal, Basra, the Arabian Sea (Bombay, Karachi) from the Scottish River to the gray waters of the Indus, has become a thing of the past now.

Reference: From Scotland to Mesopotamia & Pakistan: The Story of a veteran paddle steamer "By: Tim Willasey-Wilsey





Team Members

CONTRIBUTION





NINE WAYS TO DEVELOP YOUR SUBORDINATES

1

Praise employees when they have performed a job well: They will be more motivated if they know that you appreciate their efforts

2

Involve them to decision making solicit their suggestion.

3

Gradually mete out responsibility for tasks you usually perform personally: This develops them while freeing you for greater challenges.

4

Assign important, Challenging job: Gut them loose on risky projects, give them a chance to show what they can do.



5

Send them to a management development or personal enrichment seminar once a year: Attending seminars makes people feel important and it teaches them new skills

6

Provide frequent , honest, and objective feedback: The periodic formal performance appraisal should not contain surprise information. Don't defer praise or reprimands until then.

7

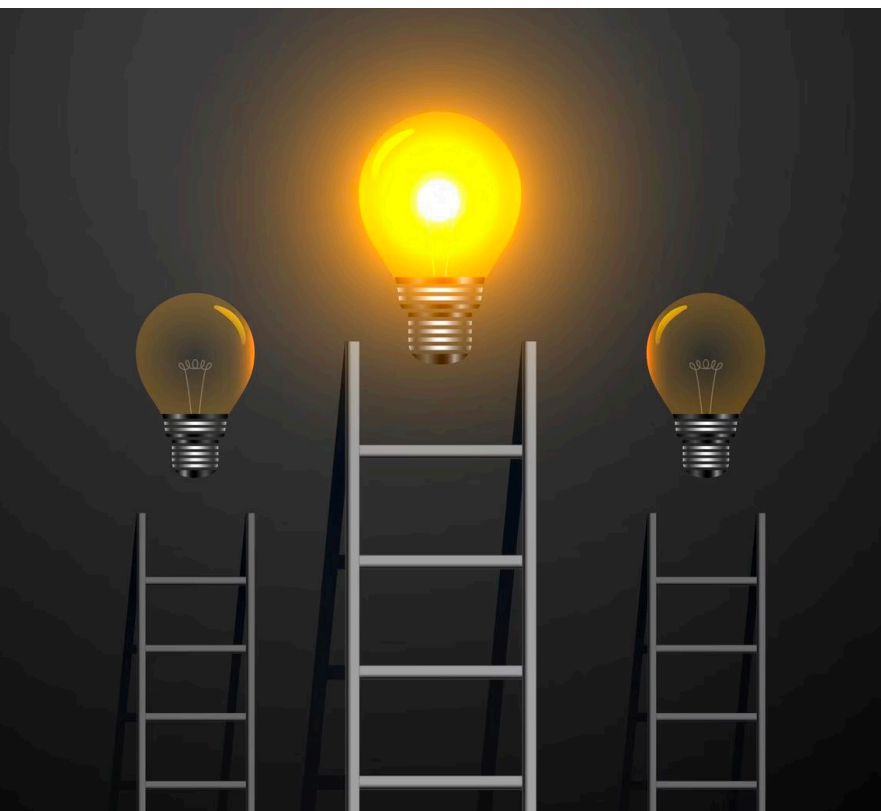
Don't solve problem for them: Teach them how to solve problem for themselves.

8


Remain accessible for their problems or questions: Keep an open door and open mind.

9

Train Your Subordinates so that one or more of them can take over your job when you leave or get promoted: Your replacement should be working for you right now.



ARTICLE BY:



GHULAM MOUHI-U-DIN SHAHZAD
AGM (Admin)



THE TOP 10 SUGAR PRODUCING COUNTRIES IN THE WORLD

ARTICLE BY:



M. ARSHAD
(AGM Cane)



Source of Article: www.czarnikow.com/blog/Adeoti-Ogunsola,Ana-Zancaner,Ben-Seed

BRAZIL



The number 1 spot goes to the country that has historically been the world's largest producer of sugarcane. The South American giant produced 29.61 MMT in 2019/20, and this was a crop when production mix was not even maximized to sugar since the sweetener returns were less attractive than ethanol – more on this dynamic further later.

INDIA



The world's largest consumer of sugar, and the top producer in 2018-19, India now produces around 30m tonnes annually. In 2019/20 India made 27.4m tonnes and most of it was low quality white sugar. The nation's massive consumption and production makes for a very large sugar industry, with roughly 50 million farmers and millions more workers involved in sugarcane farming. For this reason, the nation has been a surplus producer for almost a decade.

EUROPE



The EU is the world's largest producer of beet sugar. However, beet only represents around 20% of the world's total sugar production; much of this growth is in the northern half of Europe, where the climate is more suitable. Notable regions include France, Germany, the Netherlands, Belgium and Poland. On top of beet production, the EU also refines imported raw sugar, only to a much smaller degree.

CHINA



Only eight countries in the world produce both sugarcane and sugar beet and China is one of them. In 2019/20 China produced 10.41 MMT of sugar. Guangxi, an autonomous region in the nation, accounts for 65% of China's sugar production and over 20 million workers in cane agriculture. Droughts and floods threaten harvests in the region and in 2009 a historic drought caused production to drop to 2.15 MMT.

THAILAND



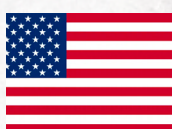
The 2019/20 season was particularly tough for Thailand's sugar industry as it was hit with possibly its worst drought in four decades,⁷ and reduced cane acreage which brought cane production to a 10-year low. This caused farmers to switch to more profitable crops, notably cassava, and meant that output in 2019/20 was only 57% of the output from the previous season.

RUSSIA



This nation is the largest producer of sugar beet and in 2019/20, far outproduced France (the EU's top beet producer) and increased its output by 27% compared to 2018/19. Russia has been doubling its sugar production over the last decade and plans to expand its beet sowing area this year.

USA



This cane and beet producer is not only a major player in the sugar market, it also dominates ethanol production albeit generated from corn instead of sugarcane. In 2019/20 the USA produced 7.3 MMT of sugar. Beet is grown in the northern parts whilst cane is grown in the South-eastern states.

MEXICO



In 2019/20 the United Mexican States (the official name for those previously unaware) produced 5.34 MMT of sugar, although this is 17% MMT less than the previous season. Poor weather is largely to blame, and the cane rebound is ongoing. Mexico's Gulf states Veracruz, Oaxaca and Tabasco are its top producers. Although it is the only Central American country on this list, Mexico is the runner up for exports, falling behind Guatemala by 630k tonnes.

PAKISTAN



Sugarcane is a major cash crop for Pakistan and, unlike India and Brazil, Pakistan grows the plant almost solely for the purpose of sugar extraction. In 2019/20 the nation made 4.8 MMT of sugar — a 9% drop from the previous season. From 2016/17 to 2019/20 Pakistan saw year-on-year decline in its sugar output. Many challenges have faced Pakistan's sugar industry, namely drought. For an agrarian economy like Pakistan, with a cane yield per hectare smaller than the world average (46k verses 60k, respectively), this is a serious problem. Although, rain in August 2020 saved the season's crop.

AUSTRALIA



When you think of Australian agriculture sugar probably is not the first crop to come to mind (which is fair since sugarcane is only 2% of the national agriculture) but Australia is the largest producer and exporter of raw sugar in Oceania and produced 4.18 MMT of sugarcane in the 2019/20 season.² 95% of Australian sugarcane is grown in the climactically diverse state of Queensland, which hosts many cane farms near its coast.



ADVANTAGES OF SUGAR

ARTICLE BY:



GHULAM MOUHI-U-DIN SHAHZAD
AGM (Admin)



Before we start, we would just like to mention that sugar can be beneficial – but only when taken in moderation. Moderate sugar intake will have a plethora of benefits – especially for those of you with a busy schedule. The biggest benefits of including sugar in your diet are:

- You will get an immediate burst of energy
- You'll be able to store energy for later in the day
- A better mood is inevitable
- Sweets such as chocolate can help you focus
- Natural sugar sources such as fruit are packed with vitamins and other micronutrients
- Sugar helps with low blood pressure
- Not avoiding sugar will help you with weight loss
- Honoring your cravings is an integral part of a balanced diet
- Sugar can help you with your skin issues

You will get an Immediate Burst of Energy from Sugar

Why do you think parents have the rule of not allowing their kids to eat anything with sugar in it before going to bed? It's because sugar can provide you with an immediate burst of energy which is bad for kids before their bedtime, but great for adults who are feeling a wave of tiredness. A sugary treat could help by giving you the immediate energy you need.



Sugar allows you to Store Energy

While sugar intake is great for giving you an immediate boost, its purpose exceeds the limits of a quick fix. Your body will store some glucose for later through a process which is called glycogenesis. With spare energy in storage, you might be able to go longer times without eating, which can be beneficial at some points.

One of the Biggest Advantages of Sugar is the Immediate Mood Boost

Have you been feeling down lately? What can you do to improve your mental health? For immediate relief, we suggest you treat yourself to a piece of candy you love. It has been proven that sugar activates the pleasure center of our brains, causing a rush of dopamine and leaving you happy and ecstatic.

You can Improve your thinking Skills with Chocolate

After many studies have been done on the topic, it has been proven that cocoa flavanols (found in chocolate) can positively impact our cognitive function. Have you ever wondered why students usually bring a chocolate bar with them when taking an exam? Well, it turns out that a few bites of chocolate can help us surpass any cognitive barriers we might have. Improve your focus and grab your favorite chocolate bar before your next exam or important meeting!

Natural Sugar Sources are Packed with Healthy Nutrients

Fruit, veggies, dairy products – we've all learned from a young age just how healthy these groups of food are. But did you know that they are also a natural source of sugar? That's why some people who are strictly against consuming any form of sugar usually stay away from fruits that are rich in sugar. Our opinion is that if you want to boost your immune system and be healthy, you have to eat a balanced diet. And a balanced diet consists of all nutrients – including sugar.

Sugar Helps with low Blood Pressure

Are you suffering from low blood pressure? Then we are sure you know by now that you are strongly advised to carry packets of sugar cubes with you at all times. If you feel like

Sugar Intake is an Integral Part of a Well-Balanced Diet

If you want to make your diet more balanced it's important to not avoid any particular food groups. Avoiding carbs might mean you'll be skipping anything that contains sugar, but such diets are usually not healthy in the long run. A healthy lifestyle means you have the freedom to eat the sugar when you want to and skip it when you're not feeling like it. Include sugar in your diet and reap all the benefits.

Sugar Can do Wonders for your Skin

Did you know that sugar glycolic acid can have great effects on the health and appeal of your skin? In fact, the advantages of sugar for this purpose are so great that they are used with assisting in acne eradication and recovering of equilibrium of the skin's oils. So the next time you find yourself dealing with skin issues, you might actually want to turn to sugar and the many benefits it can have on our bodies.



HARD WORK IS THE KEY OF SUCCESS

ARTICLE BY:



MUHAMMAD ISMAIL
(Colony Incharge)



Hard work is well known as completing a task with honesty. Hard work makes the way to success. It is tough to do hard work but it is important to make our life smooth. A hardworking person is always happy in life. The person who works hard achieves many things in life. People always love him, He is always respected by everyone, Every one of us has goals in life, To fulfil the goals we need to be hard working. Sitting idly does not help fulfilling one's aim. We all must respect the chance we get in life. Respecting the chance means doing hardworking, We must not fear failure. Failure is natural to our life. When we fail, we must not stop working hard. We all should believe in ourselves and keep trying hard until we achieve our aims, We can work hard if we have the determination and focus in life. Concentration in work is very important. If one concentrates fully while doing work, the work gets finished successfully and very soon. We must work to increase our concentration level. Hard work is very much important to develop our concentration power.

HOW SUGAR IS MADE

ARTICLE BY:



M. TAHIR USMAN
(Chief Chemist)



Cane sugar has been a sweetener of choice for over two thousand years. It is used in all types of foods due to its versatility.

It enhances flavor, aroma, texture, and browning. It also helps retain moisture and preserve freshness. Sugar starts with sugar cane. A tall tropical grass that can grow up to 20 feet high.

When it is ready for harvest the tops are removed leaving the base stocks behind so they can grow into the next crop. Sugar cane is a renewable resource that doesn't have to be replanted to produce a new crop.

After harvesting and transporting to the mill, the sugar cane is washed and cut into shreds. Next, huge rollers crush the cane really hard.





This mixture goes down to the separators, where the fibers are removed and the juice is sent on to the evaporators. Which are basically huge pots heated by a steam from Boiler.

The syrup is thickened by boiling off the water. Once the syrup is cooled, It is time for it to be crystalized. To get crystals from the syrup, it is seeded with, well crystals of sugar. Just a sprinkle is enough to kickstart the process.

From there it is moved into centrifuges where centripetal force squeezes out ant remaining liquid. Leaving, you guessed it dry sugar crystals.

Now the crystals are purified, decolorized, recrystallized, and dried in a large granulator. Next they are sized by running them through a variety of all screens all to remove any impurities and to make the sugar crystal just the right size and color. The end result is pure cane sugar, no bleaching or added chemicals required.

DIFFERENT TYPES OF SUGAR



Turbinado



Brown Sugar



Granulated

Brown sugar contains some of the surface molasses syrup which imparts that characteristic molasses flavor. Granulated sugar is the last step in the manufacturing process.

Now that the sugar is ready, there is one final step before it can be packaged and shipped. Every Batch is tested in a lab to ensure that it meets the highest standard of quality.





DIFFERENCE BETWEEN GURR & SUGAR

ARTICLE BY:



MUHAMMAD ASIF
(DGM Electrical)



Gurr and sugar are the two sweeteners that are commonly used in every Pakistani household. Sugar comes in white, translucent crystals, which is a refined and prepared form of Gurr. It is manufactured by the extreme processing and refining of natural sugar cane. Gurr is more pure form of sweetener.

Gurr and sugar are something that we use daily, and they can be found in every Pakistani home. They both are processed from cane juice but are processed differently. Gurr & sugar ensures distinct properties, benefits, uses, and values. We can use them as substitutes for each other in the kitchen. However, we generally are confused to conclude which one is better for health and has more benefits for the body.



Young
TALENT



YOUNG TALENT



HAMZA BIN ZAHID

CHEMICAL DEPARTMENT

The work environment is very important in determining how enjoyable work is. It is very important to work with smart guys who have a superior level of intellectual bandwidth and still have softer skills as well.

MUHAMMAD MUAAZ

ADMINISTRATION DEPARTMENT

I believe that working with good people matters because then the work environment is good. If there is a sense of respect and belief among the people you work with, that is when good work is done.



ATIQ UR REHMAN

IT DEPARTMENT

Success is not how high you have climbed, but how you make a positive difference to the world.



YOUNG TALENT



M. SHAHZAIB

ELECTRICAL DEPARTMENT

Your hardest times often lead to the greatest moments of your life. Keep going. Tough situations build strong people in the end.

SHEHBAZ SHARIF

CHEMICAL DEPARTMENT

Live the Life of Your Dreams: Be brave enough to live the life of your dreams according to your vision and purpose instead of the expectations and opinions of other. Success is not how high you have climbed, but how you make a positive difference to the world.



MUHAMMAD ASIF



CANE DEPARTMENT

The best innovations comes from inclusive work environments that foster diverse ideas, nurture people with diverse talent and backgrounds, and create strong relationships with diverse communities.



**PROPHET MUHAMMAD
(PBHU) SAID:**

**If Allah want to do good
to somebody He afflicts
him with trials.**

(Sahih Bukhari: Volume-07, Book-70, Number-548)



EVENTS



CHASHMA SUGAR MILLS UNIT - I

Inauguration Ceremony of Crushing
Crushing Season 2022-23 CSM 1





CHASHMA SUGAR MILLS

UNIT - II

Inauguration Ceremony of Crushing
Crushing Season 2022-23 CSM 2







ULTIMATE WHOLE FOODS

GROUND BREAKING CEREMONY



14TH AUGUST

INDEPENDENCE DAY OF PAKISTAN





CHASMA SUPER LEAGUE SEASON-1







CHASHMA ETHANOL FUEL PLANT



HEALTH & SAFETY AWARD

Quarter 3rd (July to Sep-2022)



Name: **Ameer Ali**
Desig: **Shift Engr.**
Deptt: **EFP Process**



Name: **Alamgir Khan**
Desig: **R.O Optr.**
Deptt: **R.O**



Name: **Adeel Abbas**
Desig: **Plant Optr.**
Deptt: **Biogas**



Name: **M. Shahzad**
Desig: **Filter**
Deptt: **EFP Mech**

Quarter 4th (Oct to Dec-2022)



Name: **M. Imran**
Desig: **Lab Analyst**
Deptt: **PSM Lab**



Name: **M. Abdullah**
Desig: **Jr. Electrician**
Deptt: **Electrical**



Name: **M. Laal Khan**
Desig: **Helper**
Deptt: **Civil**



Name: **M. Waseem**
Desig: **Helper**
Deptt: **Sales**



FUTURE EVENTS





IT

SEGMENT





WHAT IS ARTIFICIAL INTELLIGENCE?



MUHAMMAD UMAR FAROOQ
(Dy Manager IT)

Generally speaking, Artificial Intelligence is a computing concept that helps a machine think and solve complex problems as we humans do with our intelligence. For example, we perform a task, make mistakes and learn from our mistakes (At least the wise ones of us do!). Likewise, an AI or Artificial Intelligence is supposed to work on a problem, make some mistakes in solving the problem and learn from the problems in a self-correcting manner as a part of its self-improvement. Or in other words, think of this like playing a game of chess. Every bad move you make reduces your chances of winning the game. So, every time you lose against your friend, you try remembering the moves you made which you shouldn't have and apply that knowledge in your next game and so on. Eventually, you get better and your precision, or in this case probability of winning or solving a problem improves by a noteworthy extent. AI is programmed to do something similar to that!

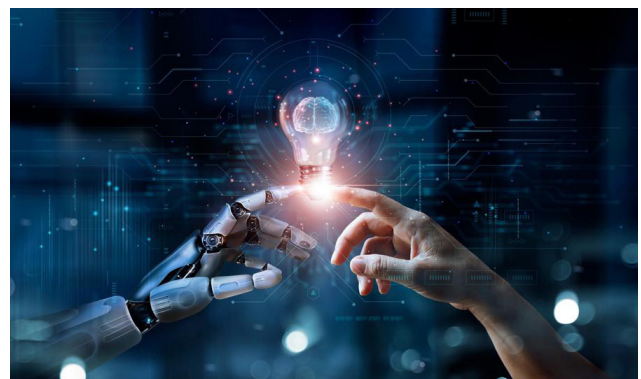
A Brief History of AI

The concept of Artificial Intelligence is not as modern as we think it is. This traces back to as early as 1950 when Alan Turing invented the Turing test. Then the first chatbot computer program, ELIZA, was created in the 1960s. [1] IBM deep blue was a chess computer made in 1977 beat a world chess champion in two out of six games, one won by the champion and the other three games were draw. [2] In 2011, Siri was announced as a digital assistant by Apple. [3] Elon Musk and some others founded OpenAI in 2015

AI at Work Today

The most common examples of uses of Artificial Intelligence can be found today in smart personal assistants like Apple's Siri and Amazon's Alexa. People interact with these devices to command them on a daily basis and these devices use the commands as a part of their dataset to learn from.

Another known example of Artificial Intelligence is the use of algorithms in Netflix. Netflix provides very much accurate and relevant suggestions of movies, tv series from our data which is created every time we stream or click on something in Netflix. As the dataset for these systems grows, their accuracy and precision increase as well. Artificial Intelligence is also viewed as a great tool for better cybersecurity. Many banks are using AI as a means to identify unauthorized credit cards uses. From analyzing complex genetic data to perform the most delicate surgeries at the highest precision is also being worked on to integrate with AI. We all know about companies like Tesla and Apple working to make flawless self-driving cars which is going to have game changing impacts on the future of transportation. Concerns about AI One of the most immediate concerns about Artificial Intelligence is the fear of losing jobs. Artificial Intelligence enhancing automation is also causing huge job losses around the world. According to a Forbes article, it is predicted that by 2025 automation will cause a loss of 85 million jobs. [6] Bigger fears regarding AI includes the scenario whereas machines become smarter and smarter they going to end up being as opinionated and biased like some of the people training it. Automatization of weapons is also a big reason people worry about the future of Artificial Intelligence. The idea that weapons can be used to search and target someone with pre-programmed instructions and the misuse of this by governments or mafias or rogue AI can be something very deadly and devastating. However, there are many myths in disguise of concerns surrounding AI that spreads panic and misinformation. AI today is nowhere near to become a super-intelligent entity and turn into our overlords like in sci-fi movies. However, heavy regulations and cautions are being advised by Big Tech giants like Elon Musk while developing this industry. Artificial Intelligence and The Future It is said that AI is the greatest thing humankind has ever worked on. AI is being used in image and speech recognition and analysis which will be far better than human recognition of image and speech and its application stretches wide and far. There are research and works being conducted using AI that is going to play a very important role in our future healthcare. AI is being worked on to cure Alzheimer's disease and someday even blindness. Someone with dyslexia is being helped to read better with the help of AI. Genetic data is being analyzed by bioinformatics; data science integrated with AI for way better data analysis in healthcare that has not been possible for us in the past. Fields like cancer research and other such diseases are being impacted greatly by advanced applications of AI. AI can be a great tool in the future of education. AI can be used to analyze data from an individual's personal and intellectual needs, capabilities, choices and limitations to develop customized curriculum, strategies and schedules that will be more well suited, appealing and inclusive of most, if not all, children and adults. The uses of AI are also going to change the way we are going to commute in the future. In addition to self-driving cars, work is being done to manufacture "self-flying" planes and drones that conveniently deliver your food faster and better. One of the biggest concerns about AI is that jobs are being replaced due to automation. However, AI might be creating more jobs than it replaces. This will change the way humans work by creating new types of jobs.





SHORTCUT KEYS



MUHAMMAD USMAN
(IT Helper CSM-2)



- **Ctrl + A** -- Select all contents of the page.
- **Ctrl + B** -- Bold highlighted selection
- **Ctrl + C** -- Copy selected text.
- **Ctrl + X** -- Cut selected text.
- **Ctrl + N** -- Open new/blank document.
- **Ctrl + O** -- Open options.
- **Ctrl + P** -- Open the print window.
- **Ctrl + F** -- Open find box.
- **Ctrl + I** -- Italicise highlighted selection.
- **Ctrl + K** -- Insert link.
- **Ctrl + U** -- Underline highlighted selection.
- **Ctrl + V** -- Paste.
- **Ctrl + Y** -- Redo the last action performed.
- **Ctrl + Z** -- Undo last action.
- **Ctrl + G** -- Find and replace options.
- **Ctrl + H** -- Find and replace options.
- **Ctrl + J** -- Justify paragraph alignment.
- **Ctrl + L** -- Align selected text or line to the left
- **Shift + F3** -- Change case of selected text.
- **Shift + Insert** -- Paste.
- **Ctrl + 1** -- Single-space lines.
- **Ctrl + 2** -- Double-space lines.



- **CTRL + 1** Format Box
- **ALT + E + S + T** Copy Format
- **ALT + H + 0** Increase Decimal
- **ALT + H + 9** Decrease Decimal
- **CTRL + SHIFT + 7** Boxing
- **ALT + 0 + C + A** Fit Column Width
- **ALT + H + 0 + R** Change Tab Name
- **ALT + W + F (Un)** Split Panes
- **ALT + W + S (Un)** freeze windows
- **SHIFT + CTRL + #** Date Format
- **SHIFT + CTRL + \$ \$** Dollar Format
- **SHIFT + CTRL + % %** Percentage Format
- **ALT + "="** Sum Function Arrows Move
- **SHIFT + Arrows** Select A Cell Range
- **CTRL + Pg Up/Down** Switch Worksheets
- **ALT + Tab** Switch Programs
- **SHIFT + F2** Insert a Comment Enter Move below
- **Shift + Enter** Move Up
- **F7** Spell Check
- **F12** Save As



Corporate Social Responsibility

C.S.R





CANTEEN

Canteens are established at our all-production units for workers. The mills provide monthly subsidy to all canteens for the welfare of the workers, which provides good quality and hygienic food to the workers at a very low rate.



FREE DISPENSARY

Keeping in view the public health issues and for the betterment of the area, a dispensary has been established at the Chashma Ethanol Fuel Plant, which provides free medical services and medicines to our workers, the residents of the colony and the people of the suburbs. Our trained staff is available from 8 am to 4 pm.





FREE PICK AND DROP

Chashma Sugar Mills provides free pick and drop facility from the city to the factories for the workers and staff on a daily basis.



WATER FILTRATION PLANT

Clean water is essential for good health. We have installed a water filter for the residents and workers of the colony. This plant provides Clean and healthy waters to the public.





SUPPLY OF SOLAR SYSTEM TO FARMERS

The heavy flood of 2022 has greatly affected the Chashma Right Bank Canal. After heavy devastation, where other problems have come up the growth of Sugarcane crop suffer a lot due to non-availability of water.

To resolve this issue management of Chashma Sugar Mills installed Solar Tube well system for our valuable farmers on interest free loan basis.





WELFARE OF FARMER

Chashma Sugar Mills provides interest free loans to the farmers every year in the form of fertilizers, seeds, and pesticides. We also organize workshops from time to time to educate our valuable farmers about modern methods of agriculture. Majority of our farmers are uneducated and have a limited knowledge of modern methods due to this their production per acre is very less and not fulfilling the country's requirements.

They do not have much knowledge about the use of pesticides, selection of quality seeds and proper use of artificial fertilizers.

That is why the management of Chashma Sugar Mills remain in touch with the farmers from seeding to cultivation of the Sugarcane crop.

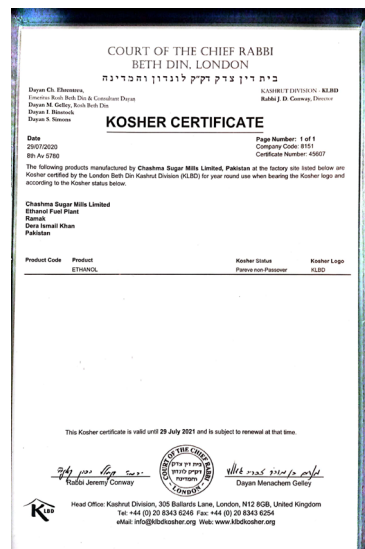
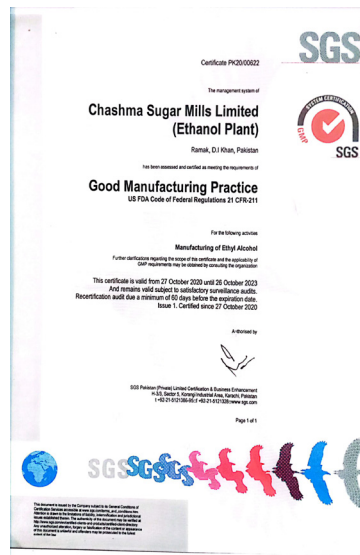
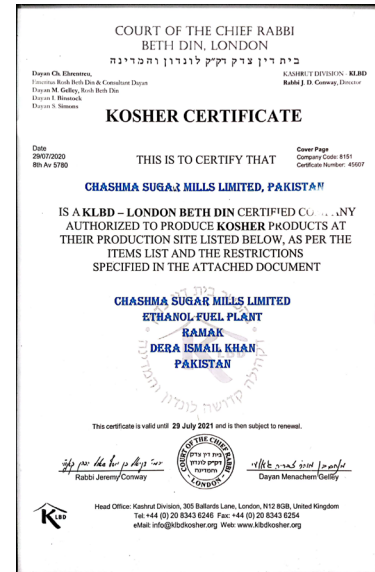


AKPEDIA





CERTIFICATES





Kids

GALAXY





I RAIN



AYEZAH NOOR

Class 2, PSM Mardan

I like Rain

Freshness to brain

Happiness of rain

I can't explain

Gives water to grain

Keeps fresh my brain





WHAT TIME MEANS TO A PERSON

- Value of 1 millisecond
- Ask the person who won a silver medal.
- Value of 1 Second
- Ask the person who just avoided an accident.
- Value of 1 Minute
- Ask the person who missed the train.
- Value of 1 Hour
- Ask the person who is waiting for someone.
- Value of 1 Day
- Ask the person who is hungry for whole day.
- Value of 1 Week
- Ask the person who has been admitted to hospital for a whole week.
- Value of 1 Month
- Ask the person who has not received his/her salary.
- Value of 1 Year
- Ask the person who has failed. Therefore, be thankful for every moment.



HUZAIFA

Class 2, PSM Mardan





SWEET MEMORIES OF CHASHMA FAMILY KIDS

